

Orienteering Map of RIDLEY CREEK STATE PARK

scale 1:10,000
contour interval 5 m

DVOA
Delaware Valley Orienteering Association
14 Lake Drive, Spring City, PA 19475
610-792-0502 frankdvoa@aol.com
http://www.dvoa.us/orienteering.org/

Photogrammetry 1987:
Harvey Map Services, Ltd

Previous version 1989-1991:
Graeme Ackland, Roger Bohlin,
Jim Browne, Jim Eagleton,
John Edwards, Peter Edwards,
Henrick Karlsson, Ann Merriam,
Bob Meyer, Rick Oliver, Ed Scott,
Tim Walsh, Eric Weyman,
Debbie Newell, Peggy Dickson

Field work and Drafting 2001:
Vladimir Zherdev, Russia
vzherdev@online.ru

Production Assistance by:
Eric Weyman, Hugh MacMullan



Blue meridian lines point
to Magnetic North. No
correction required for
declination.

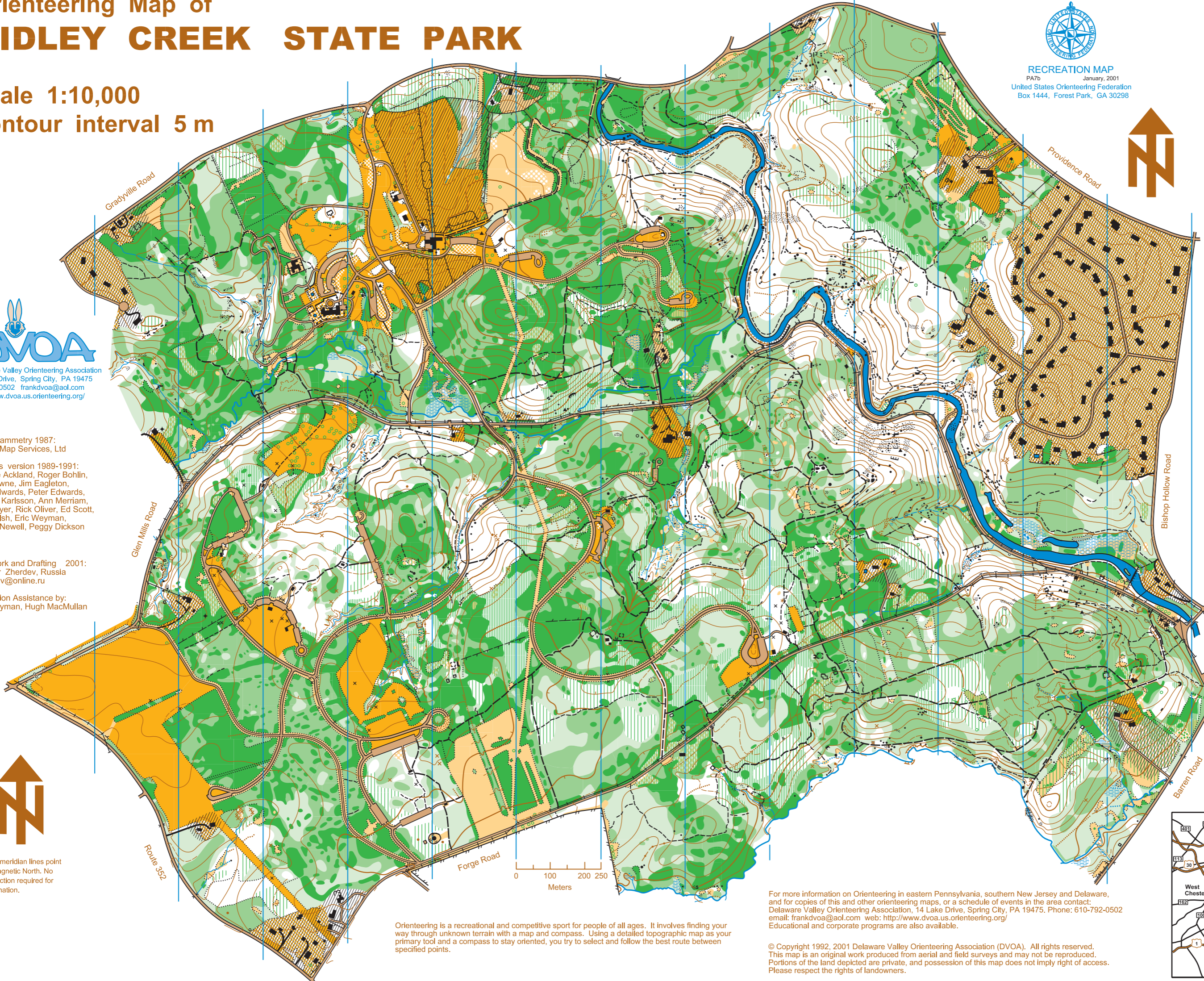


RECREATION MAP
PA7b January, 2001
United States Orienteering Federation
Box 1444, Forest Park, GA 30298



Legend

- paved road
- pavement, gravel
- dirt road
- vehicle trail
- large foot path
- small foot path
- indistinct path
- stone wall
- ruined stone wall
- fence
- ruined fence
- uncrossable fence
- power line
- building
- ruin
- cemetery, misc. object
- cairn, rocky pit
- boulder: small, large
- passable cliff
- impassable cliff
- boulder field, stony ground
- bare rock
- contours/index contours, form line
- gully, dry ditch
- small knoll, depression
- pit, broken ground
- earth bank
- large earth wall
- small earth wall
- rootstock*
- stream: wide, small
- small pond
- spring, waterhole
- lake, uncrossable river
- intermittent stream
- marsh
- marsh, indistinct marsh
- open land
- rough open
- open with scattered trees
- rough open with scattered trees
- vegetation: slow running
- vegetation: difficult to run
- vegetation: fight
- undergrowth: dense, less dense
- distinct vegetation boundary
- out of bounds*
- distinct tree: evergreen, deciduous
- * not an IOF symbol



Orienteering is a recreational and competitive sport for people of all ages. It involves finding your way through unknown terrain with a map and compass. Using a detailed topographic map as your primary tool and a compass to stay oriented, you try to select and follow the best route between specified points.

For more information on Orienteering in eastern Pennsylvania, southern New Jersey and Delaware, and for copies of this and other orienteering maps, or a schedule of events in the area contact: Delaware Valley Orienteering Association, 14 Lake Drive, Spring City, PA 19475. Phone: 610-792-0502 email: frankdvoa@aol.com web: http://www.dvoa.us/orienteering.org/ Educational and corporate programs are also available.

© Copyright 1992, 2001 Delaware Valley Orienteering Association (DVOA). All rights reserved. This map is an original work produced from aerial and field surveys and may not be reproduced. Portions of the land depicted are private, and possession of this map does not imply right of access. Please respect the rights of landowners.

